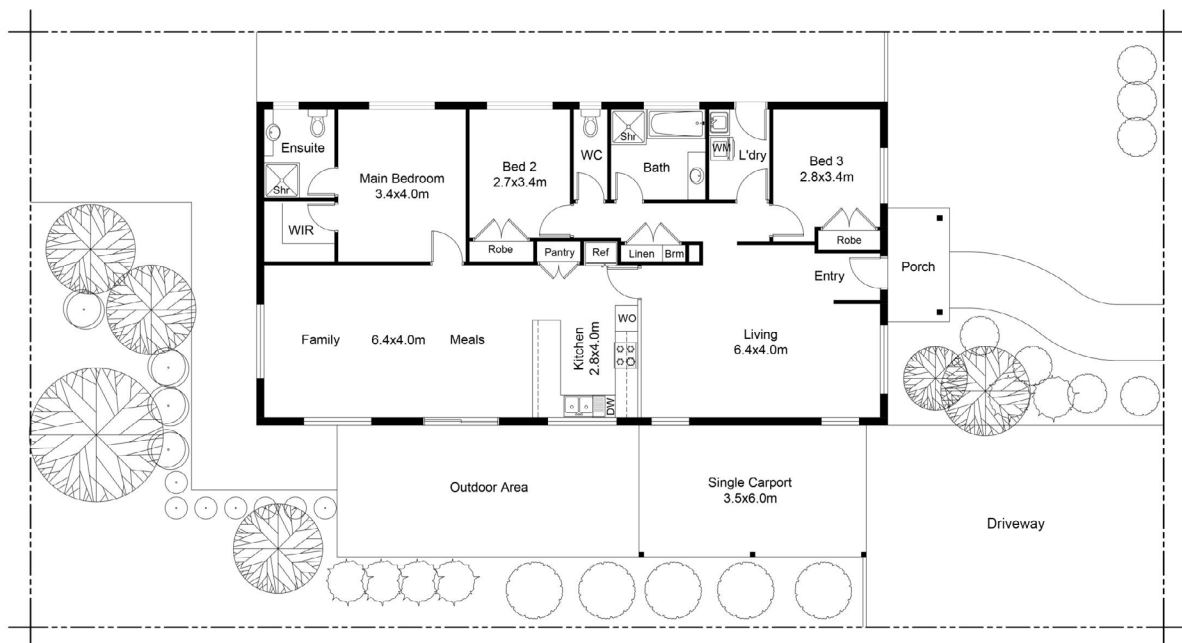




HOW TO MEASURE AND DRAW A PROPERTY FLOOR PLAN



FLOOR PLAN ON SITE PLAN

This floor plan including furniture, fixture measurements and dimensions are approximate and for illustrative purposes only. BoxBrownie.com gives no guarantee, warranty or representation as to the accuracy and layout. All enquiries must be directed to the agent, vendor or party representing this floor plan.

Property floor plans are essential tools for real estate and building professionals. They provide a visual representation of a property's layout, helping buyers, sellers, architects, and contractors make informed decisions. This step-by-step guide will walk you through the process of accurately measuring and drawing property floor plans.

MATERIALS AND TOOLS:

- Measuring tape (25-50 feet)
- Laser measuring device (optional, for precise measurements)
- Graph paper or grid paper
- Pencils and erasers
- Straightedge ruler
- Architectural scale
- Clipboard or sketchbook
- Camera (optional, for reference)



STEP 1: MAKE A ROUGH SKETCH

After familiarizing yourself with the property's layout and identifying key features, start making a rough sketch of the exterior walls on your graph paper, including any exterior windows and doors. Then, sketch in your interior walls and doors. Don't worry if you have to make several changes to this sketch to get it right!

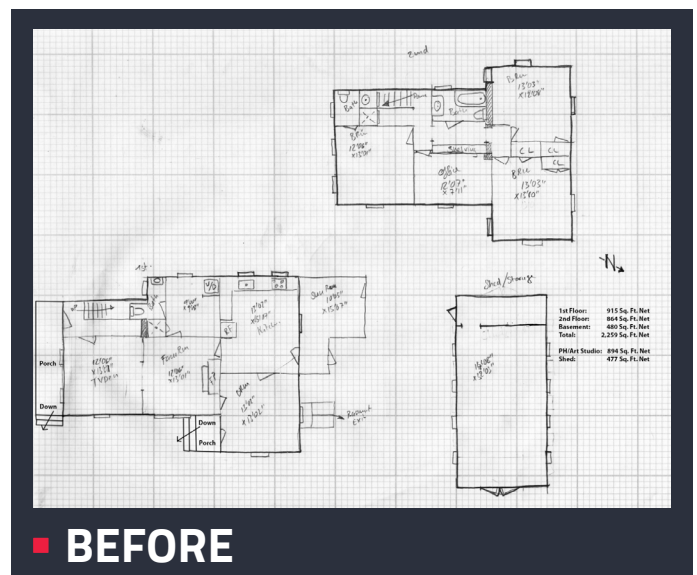
STEP 2: START WITH THE EXTERIOR DIMENSIONS

Measure the overall dimensions of the property's exterior. Begin at one corner of the building and use the measuring tape or laser device to measure the length of each exterior wall. Record the measurements on your sketch. For multi-story properties or split-level interior areas, use a separate piece of paper for each level, ensuring that you indicate where the stairs are and label each floor.

STEP 3: MEASURE INTERIOR WALLS

Inside the property, measure the interior walls. Start from one corner of the property and work your way around the entire space. Measure each wall's length and record these measurements on your sketch. Be sure to account for any alcoves, closets, or irregular shapes.

Tip: When drawing a floor plan for an apartment or condo, refer to the emergency evacuation/fire escape plan located in the building. This will give you a guideline of the main exterior walls of the apartment and sometimes they also display the internal walls as well.



■ BEFORE



■ AFTER



STEP 4: INCLUDE DOORS AND WINDOWS

Measure and record the dimensions of all doors and windows on your floor plan. Indicate the location and size of each opening. For doors, make sure you indicate which way the doors open and refer to the symbols sheet provided in this guide to help you draw them.

STEP 5: ADD DETAILS

Include additional details such as counters, electrical outlets, light switches, heating vents, and plumbing fixtures. You can also choose to add any furniture to your floor plan if desired.

STEP 6: USE AN ARCHITECTURAL SCALE

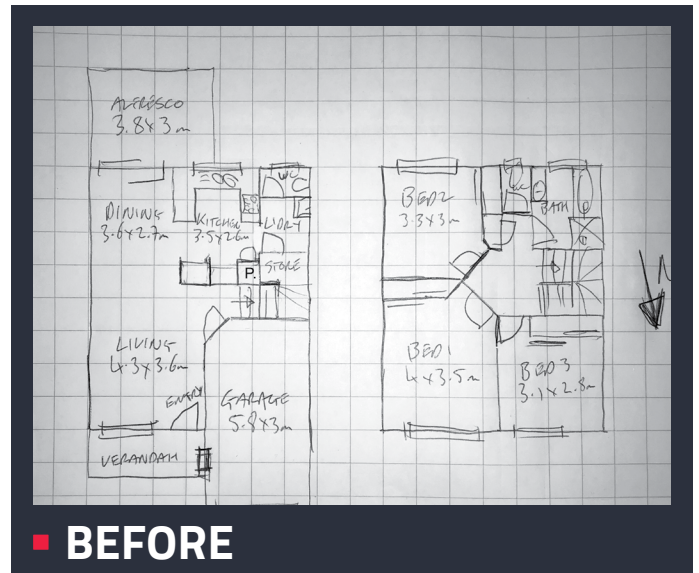
To ensure accuracy, use an architectural scale to convert the measurements into a scaled drawing. Common scales include $1/4" = 1$ foot or $1/8" = 1$ foot. Consistently apply the chosen scale throughout your floor plan.

STEP 7: CONVERT THE ROUGH SKETCH INTO THE FLOOR PLAN

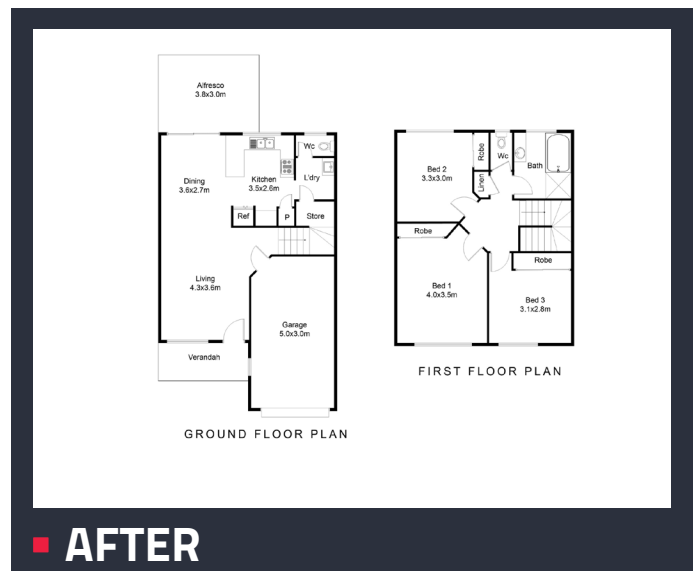
Using a straightedge ruler (short rulers are often easier to use), draw the floor plan on your graph paper, adhering to the scale you've chosen. Start with the exterior walls and then add interior walls, doors, windows, and room dimensions. Make sure your drawing is as neat as possible.

Tip: Did you know we offer a dynamic variety of professional floor plans starting from just US\$24?

Visit our website to explore our 2D and 3D range, available in simple black and white or full color.



■ BEFORE



■ AFTER



STEP 8: REVIEW AND VERIFY

Walk around the property to ensure you haven't missed anything, then double-check your measurements and drawings for accuracy. Compare your floor plan to the rough sketch, and any reference materials or photographs you've taken.

STEP 9: LABEL AND FINALIZE

Label each room and mark any important notes on your floor plan. Include a North arrow to indicate orientation if applicable. Many smartphones have a compass app - use it to determine the North direction. Ensure all elements are clearly labelled and easy to understand and don't forget to write down the address on the plan to avoid any confusion later.

STEP 10: SUBMIT FOR A REDRAW

Now it's time to turn your drawing into a professional floor plan. We offer a range of floor plan styles, including 2D, 3D, and branded floor plans. To turn your drawing into a professional floor plan, submit a picture of it along with your preferences for the final plan's appearance. Feel free to include as many notes as needed to explain your drawing to our team.

Tip: Did you know you can customize floor plans with your branding? [Contact our Customer Service team](#) and ask about our Branded Floor Plan Template.



■ BEFORE

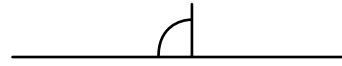


705/292 Boundary Street, Spring Hill

■ AFTER



Compass Point (use smartphone app for this)



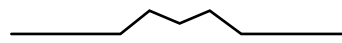
Single Door (please indicate which way it swings)



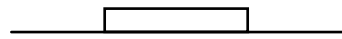
Double Doors (please indicate which way it swings)



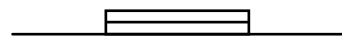
Sliding Doors (please indicate which way it slides)



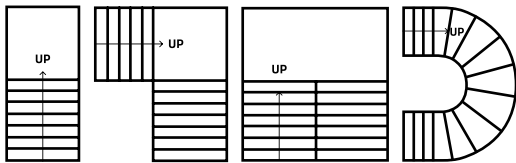
Bifold Doors



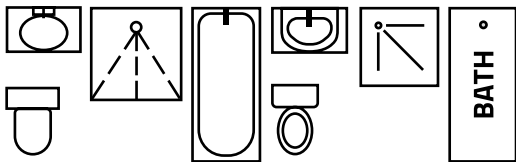
Standard Window



Garage Door



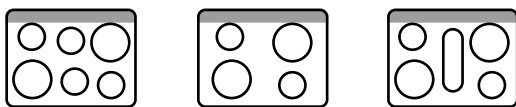
Stairs (please Indicate the upward direction of the stairs with an arrow)



Bath, Shower, Toilet & Sink



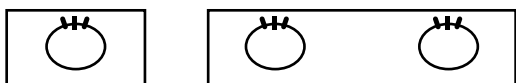
Kitchen Sink (always show the specific layout)



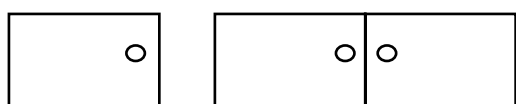
Stove/Oven (always show the specific layout)



Dishwasher, Oven & Refrigerator



Single Sink/Double Sink



Cupboard/Closet